



**C2 R2 MAX**

Version 03 – 30 june 2009



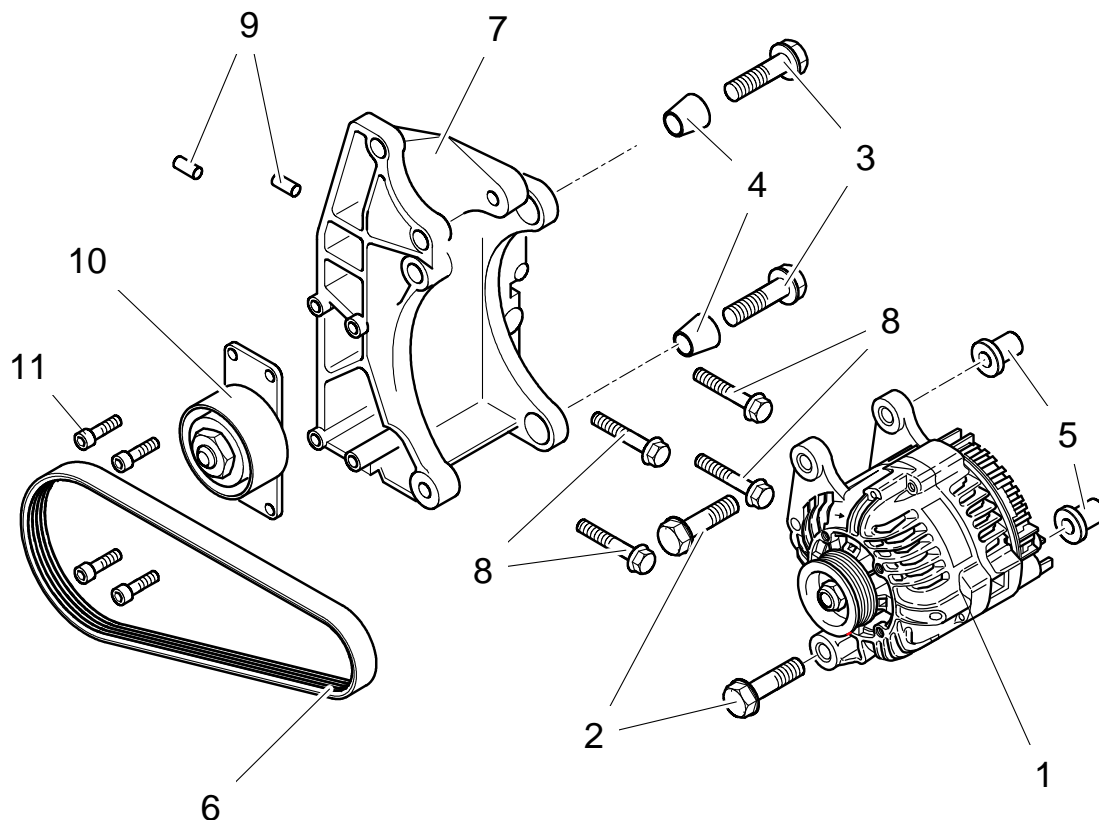
# **A31 GENERATOR**





**C2R2MAX**

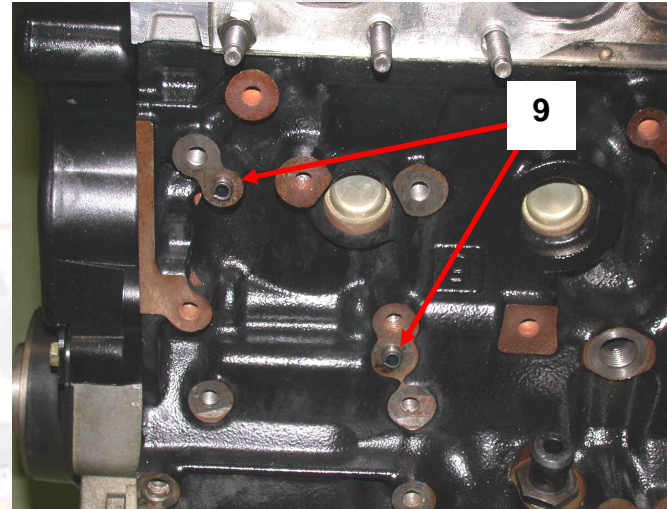
Version 03 – 30 june 2009



Ref	Reference	Qty	Description
1	0A3188017B	1	Modified alternator
2	BCSP6925R9	2	Screw, alternator / Bracket pulley side TH M10x150 Lg 55 Washer
3	BCSP691320	1	Screw, alternator / Bracket exhaust side TH M10x150 Lg 45
4	BCSP570384	2	Alternator centring bushing
5	BCSP570385	2	Alternator spacer
6	BCSP5750VT	2	Belt accessories 6pk1125
7	BCSP5706J4	1	Alternator mount
8	BCSP6925J5	4	Screw, alternator bracket on block M8x125 Lg 60
9	BCSP696851	2	Bracket pin d8x12
10	BCSP575150	1	Tension roller
11	BCSP691310	4	Screw for roller on bracket HSHC M6x100 Lg20 CI10.9 ZN

### Fitting the alternator

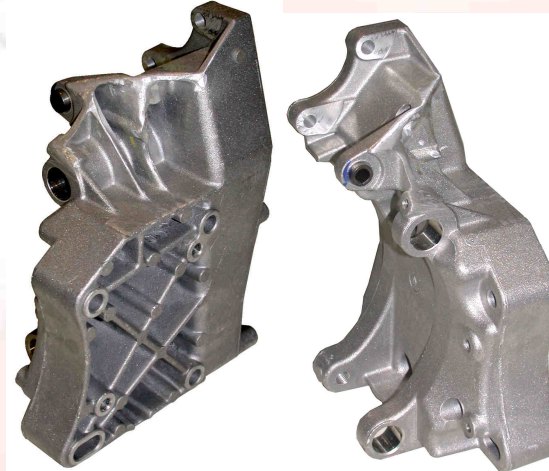
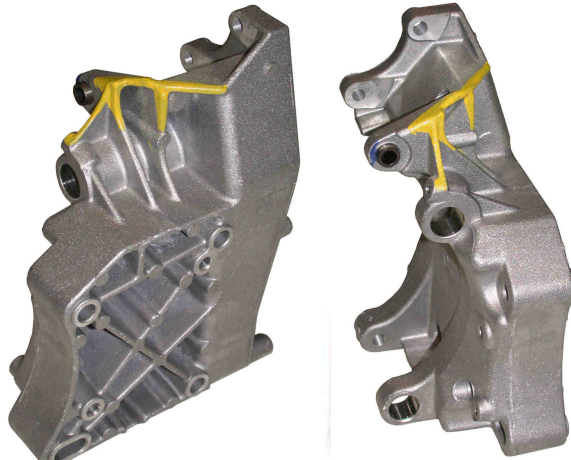
Fit the bracket pins ([ref.9](#)) on the block.



Modify the alternator bracket ([ref.7](#)) by grinding down the yellow parts to facilitate the passage of the exhaust (see photos below)

Areas shown in yellow to be ground down

End result



**A31  
Generator**

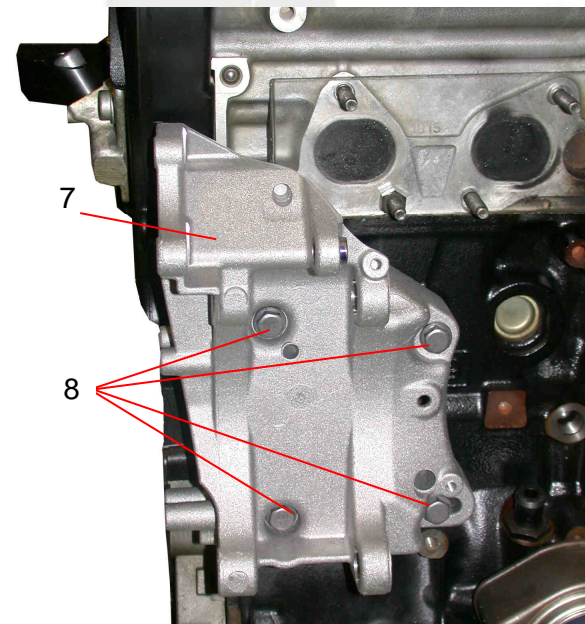


**TO  
ENGINE**





Fit the alternator bracket ([ref.7](#)) on the block using screws ([ref.8](#)).



242

3 m.kg

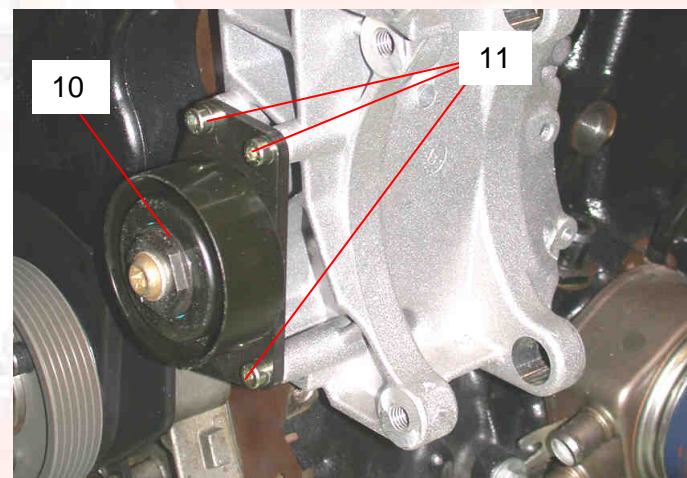


Fit the tension roller ([ref.10](#)), without tightening it, on the alternator bracket using screws ([ref.11](#)).

*N.B.: the tightening roller will be tightened after assembling the power steering pump, fitting the belt accessory and tensioning the latter.*

**Loctite: 242**

**Tightening torque: 1.5 m.kg**



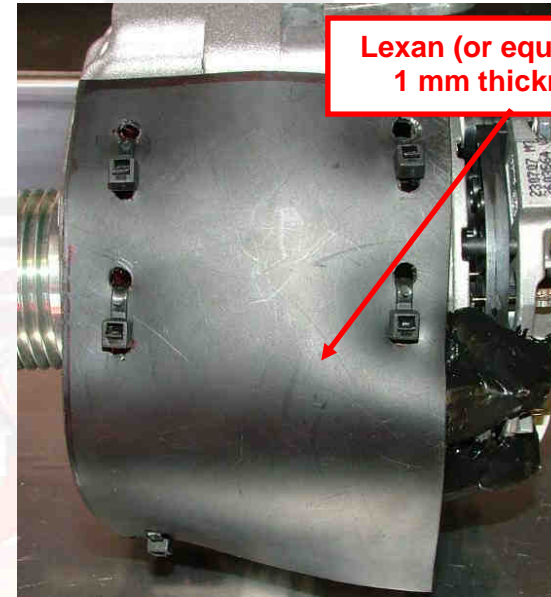
**A31  
Generator**



**TO  
ENGINE**



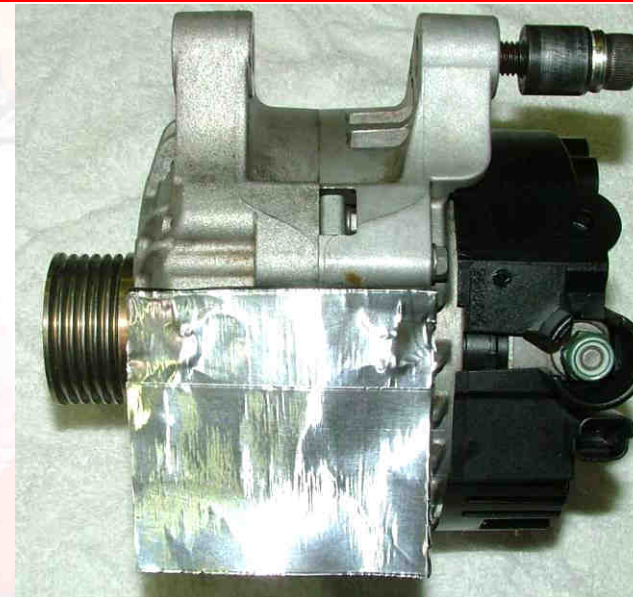
Cut-out a piece of 1mm thickness lexan (or equivalent), and attach it on the body of the alternator with some tie-raps, as shown on the picture below .



**Lexan (or equivalent)  
1 mm thickness.**



Put some aluminium tape on the protection, to seal tie-raps holes.



**A31  
Generator**

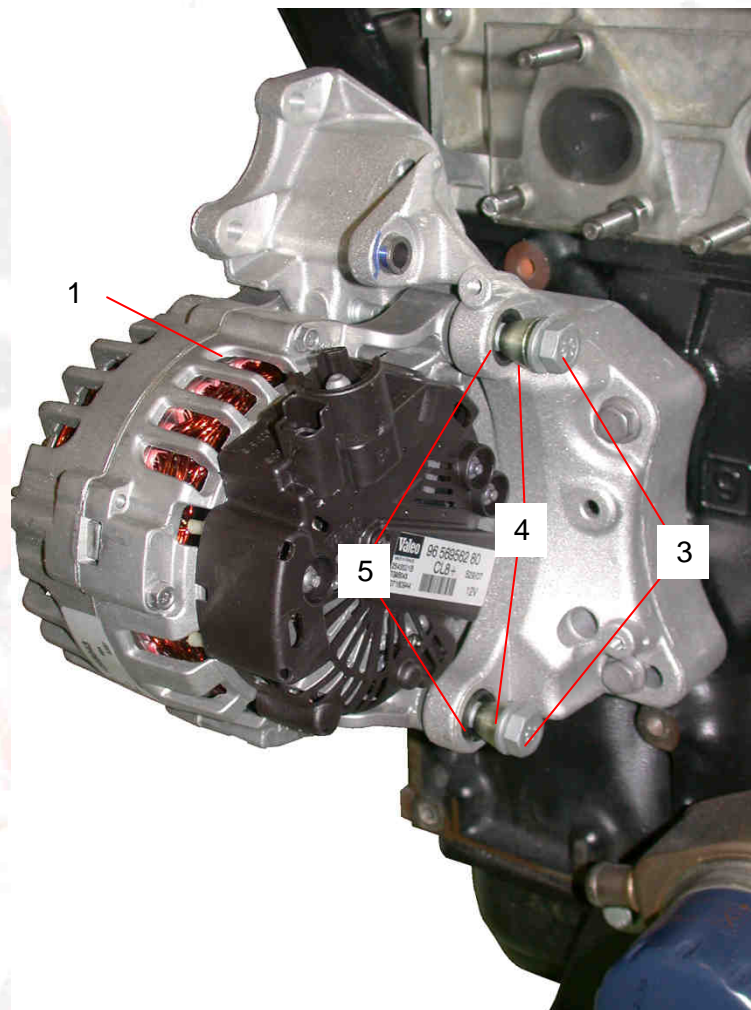
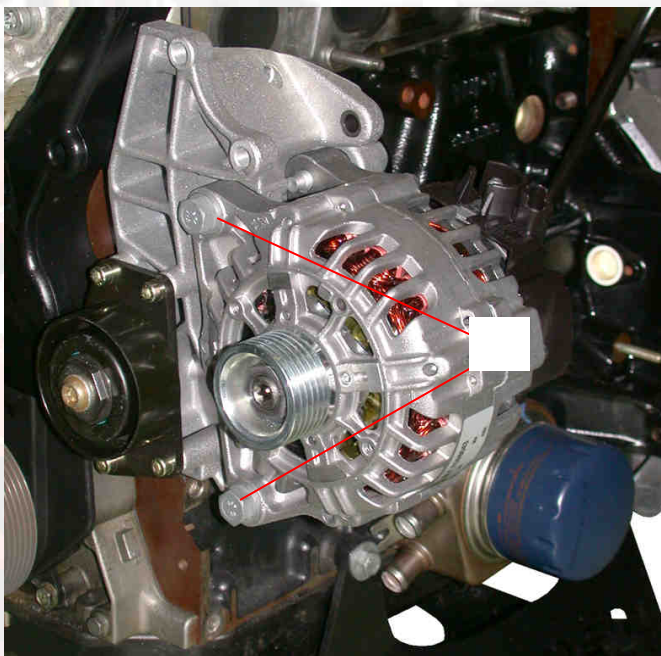


**TO  
ENGINE**



Fit the alternator ([ref.1](#)) on its bracket using:

- alternator centring bushings ([ref.4](#)),
- alternator spacers ([ref.5](#)),
- alternator / bracket pulley side screws ([ref.2](#))
- alternator / bracket exhaust side screws ([ref.3](#))



**Pulley side  
screw [ref 2](#)**

**4,3 m.kg**

**Exhaust side  
screw [ref 3](#)**

**3 m.kg**

**A31  
Generator**



**TO  
ENGINE**



**Nota :** We remind you that the tuning, the assembly and the settings of a racing engine require specific tools and specialists abilities.

To guarantee a good level of performance and reliability, CITROËN Racing recommend ORECA Magny Cours, partner of our applications since many years.

**A31  
Generator**



**TO  
ENGINE**



**A31  
Generator**



**TO  
ENGINE**